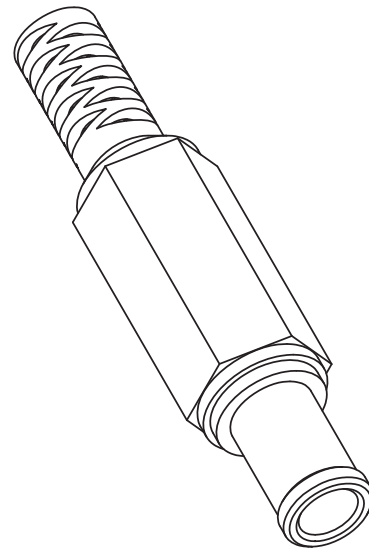
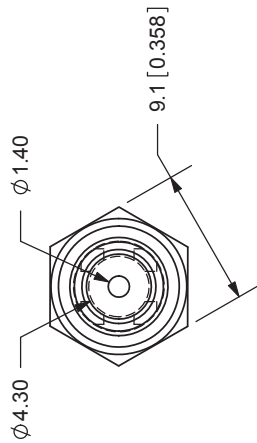
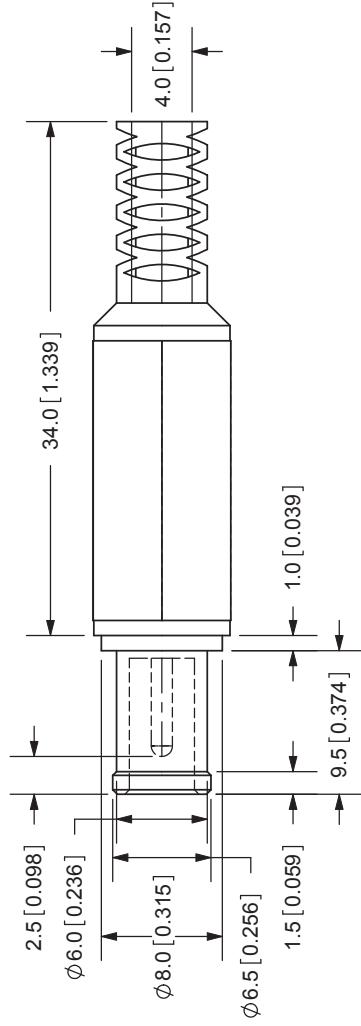


REV.	DESCRIPTION	DATE
A	NEW DRAWING	5/4/2006



TOLERANCE:
 X.X ±0.2mm
 X.XX ±0.1mm
 X.XXX ±0.05mm



20050 SW 112th Ave.
 Tualatin, OR 97062
 Phone: 503-612-2300
 800-275-4899
 Fax: 503-612-2383
 Website: www.cui.com

SPECIFICATIONS:
 RATING: 24V DC @ 7A
 INSULATION RESISTANCE: 100M OHMS MIN: 500V DC
 VOLTAGE WITHSTAND: 500V AC R.M.S. FOR 1 MINUTE
 LIFE: 5,000 CYCLES
 OPERATING TEMP: 0° ~ +40°C

TITLE: DC POWER PLUG	REV: A	
PART NO: PP-016	UNITS: MM [INCHES]	
DRAWN BY: ZRJ	APPROVED BY:	
	SCALE: 2:1	
COVER	MATERIAL	PLATING
PIN	PE	Black Color
BARREL	Brass	Nickel
TERMINALS	Brass	Nickel
TIP INSULATOR	Brass	Nickel
	PBT	